

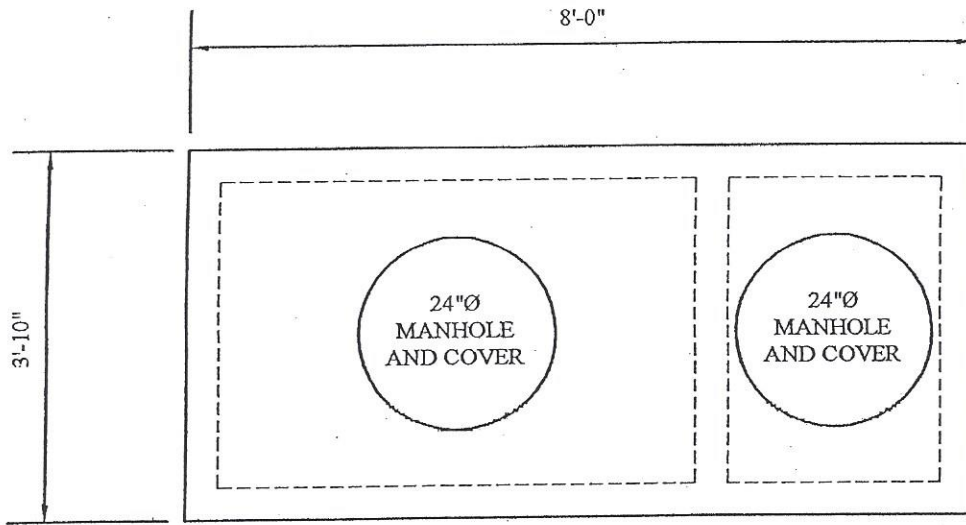
NOTES:

A. REINFORCEMENT: 6X6X10X10 WIRE GAGE IN WALL AND FLOORS.

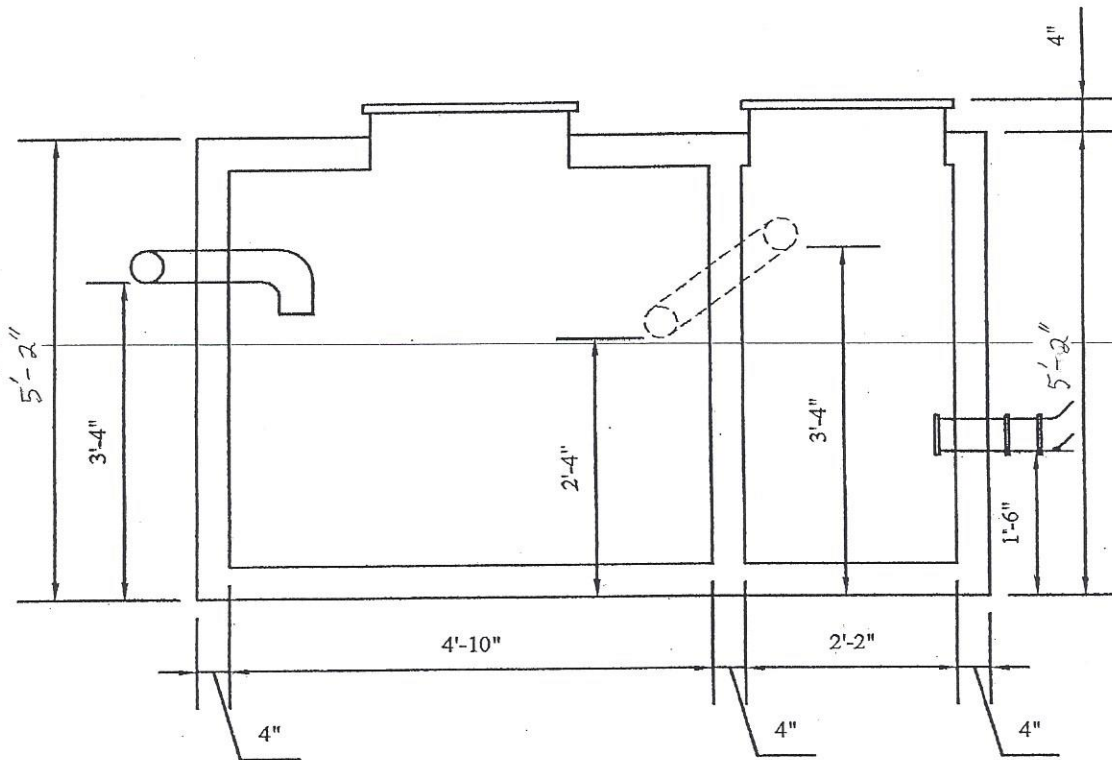
#4 BARS AT 1'-0" ON CENTER EACH WAY IN LID.

B. 4000 PSI 28 DAY COMPRESSIVE STRENGTH CONCRETE.

C. CASTING TO BE DELIVERED LOOSE AND TO BE POURED INTO THE FINISHED FLOOR.



PLAN- TOP SLAB



SECTION

LISTER INDUSTRIES	LISTER INDUSTRIES	DATE:2/2/10	CONCRETE SAND/OIL TRAP
-------------------	-------------------	-------------	------------------------